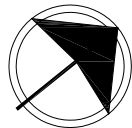
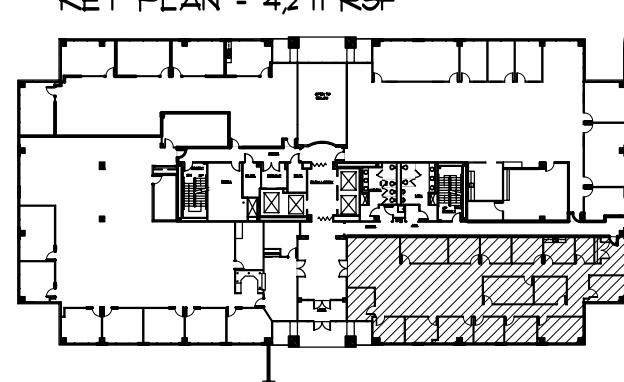


KEY PLAN - 4,271 RSF



1
MK-1

Available Suite

SCALE: NTS

Ravine Two
600 Townpark Lane
Suite 190
Taylor & Mathis Kennesaw, GA

This drawing is the property of Schneider Wright Inc. and is not to be reproduced or used in whole or in part in any way without the written permission of Schneider Wright Inc.

date: 4/29/09
drawn by: LKO
checked by:

Marketing Plan

MK-1